

FEIDER

MACHINES



BISCUIT JOINTER

FMLC1010

USER GUIDE


CAUTION: Read this manual before using this machine!

CONTENTS

1. SAFETY INSTRUCTIONS.....	3
2. YOUR PRODUCT.....	6
3. OPERATION.....	7
4. MAINTENANCE / CLEANING.....	10
5. EXPLOSION DIAGRAM.....	11
6. DISPOSAL.....	12
7. DECLARATION OF CONFORMITY.....	13
8. WARRANTY.....	14
9. PRODUCT FAILURE.....	15
10. WARRANTY EXCLUSIONS.....	16

1. SAFETY INSTRUCTIONS

General Power Tool Safety Warnings

 **WARNING:** Read all safety warnings and all instructions. *Failure to follow the warnings and instructions may result in electric shock, fire and/or serious injury.*

Save all warnings and instructions for future reference.

The term "power tool" in the warnings refers to your mains-operated (corded) power tool or battery-operated (cordless) power tool.

1) Work area

- a) **Keep work area clean and well lit.** *Cluttered and dark areas invite accidents.*
- b) **Do not operate power tools in explosive atmospheres, such as in the presence of flammable liquids, gases or dust.** *Power tools create sparks which may ignite the dust or fumes.*
- c) **Keep children and bystanders away while operating a power tool.** *Distractions can cause you to lose control.*

2) Electrical safety

- a) **Power tool plugs must match the outlet. Never modify the plug in any way. Do not use any adapter plugs with earthed (grounded) power tools.** *Unmodified plugs and matching outlets will reduce risk of electric shock.*
- b) **Avoid body contact with earthed or grounded surfaces such as pipes, radiators, ranges and refrigerators.** *There is an increased risk of electric shock if your body is earthed or grounded.*
- c) **Do not expose power tools to rain or wet conditions.** *Water entering a power tool will increase the risk of electric shock.*
- d) **Do not abuse the cord. Never use the cord for carrying, pulling or unplugging the power tool. Keep cord away from heat, oil, sharp edges or moving parts.** *Damaged or entangled cords increase the risk of electric shock.*
- e) **When operating a power tool outdoors, use an extension cord suitable for outdoor use.** *Use of a cord suitable for outdoor use reduces the risk of electric shock.*
- f) **If operating a power tool in a damp location is unavoidable, use a residual current device (RCD) protected supply.** *Use of an RCD reduces the risk of electric shock.*

3) Personal safety

- a) **Stay alert, watch what you are doing and use common sense when operating a power tool. Do not use a power tool while you are tired or under the influence of drugs, alcohol or medication.** *A moment of inattention while operating power tools may result in serious personal injury.*
- b) **Use personal protective equipment. Always wear eye protection.** *Protective equipment such as dust mask, non-skid safety shoes, hard hat, or hearing protection used for appropriate conditions will reduce personal injuries.*
- c) **Prevent unintentional starting. Ensure the switch is in the off-position before connecting to power source and/or battery pack, picking up or carrying the tool.**

Carrying power tools with your finger on the switch or energising power tools that have the switch on invites accidents.

d) Remove any adjusting key or wrench before turning the power tool on. *A wrench or a key left attached to a rotating part of the power tool may result in personal injury.*

e) Do not overreach. Keep proper footing and balance at all times. *This enables better control of the power tool in unexpected situations.*

f) Dress properly. Do not wear loose clothing or jewellery. Keep your hair, clothing and gloves away from moving parts. *Loose clothes, jewellery or long hair can be caught in moving parts.*

g) If devices are provided for the connection of dust extraction and collection facilities, ensure these are connected and properly used. *Use of these devices can reduce dust-related hazards.*

4) Power tool use and care

a) Do not force the power tool. Use the correct power tool for your application. *The correct power tool will do the job better and safer at the rate for which it was designed.*

b) Do not use the power tool if the switch does not turn it on and off. *Any power tool that cannot be controlled with the switch is dangerous and must be repaired.*

c) Disconnect the plug from the power source and/or the battery pack from the power tool before making any adjustments, changing accessories, or storing power tools. *Such preventive safety measures reduce the risk of starting the power tool accidentally.*

d) Store idle power tools out of the reach of children and do not allow persons unfamiliar with the power tool or these instructions to operate the power tool. *Power tools are dangerous in the hands of untrained users.*

e) Maintain power tools. Check for misalignment or binding of moving parts, breakage of parts and any other condition that may affect the power tools operation. If damaged, have the power tool repaired before use. *Many accidents are caused by poorly maintained power tools.*

f) Keep cutting tools sharp and clean. *Properly maintained cutting tools with sharp cutting edges are less likely to bind and are easier to control.*

g) Use the power tool, accessories and tool bits etc. in accordance with these instructions and in the manner intended for the particular type of power tool, taking into account the working conditions and the work to be performed. *Use of the power tool for operations different from those intended could result in a hazardous situation.*

5) Service

a) Have your power tool serviced by a qualified repair person using only identical replacement parts. *This will ensure that the safety of the power tool is maintained.*

Jointers safety warnings




- **Disc cutters must be rated for at least the speed marked on the tool.** *Disc cutters running over rated speed can fly apart and cause injury.*
- **Always use the guard.** *The guard protects the operator from broken disc cutter fragments and unintentional contact with the disc cutter.*




- **Hold power tool by insulated gripping surfaces because the cutter may contact its own cord. Cutting a "live" wire may make exposed metal parts of the power tool "live" and could give the operator an electric shock.**

⚠ WARNING! Please also read the enclosed general safety instructions carefully before putting your grooving machine into service and working.

- Do not use blunt or damaged disc cutters.
- Check the proper function of the guard retracting system before use.
- Ensure that the machine is switched off before inserting the plug in the socket.
- Check plug and cable for damage before inserting. If damage is found, replacement must be made immediately by a technician.
- Make sure before starting the biscuit jointer that the rated voltage on the nameplate corresponds with the mains voltage. The machine is only suitable for AC 230-240V power supplies.
- The biscuit jointer is double-insulated and (conforming to CEE and VDE regulations) has a two-conductor cable without ground conductor. The machine can be connected without risk to an ungrounded socket.
- Do not drill the motor case (e.g., attach labels) since these damages the double insulation. Use only adhesive labels for labeling.
- Clamp work tightly if possible and guide machine with both hands.
- Connected and properly use dust extraction and collection facilities.
- Always use eye and hearing protection.
- Use dust mask for appropriate conditions will reduce personal injuries.
- Only use 100x4x22mm size disc cutters to be used.
- Use only perfectly sharpened cutters, since otherwise increased cutting forces may shift the work away.
- The machine should only be used for the applications described in these operating instructions.
- Do not expose the tool to rain or use in damp locations.
- Only disk cutters complying with EN 847-1 can be used.
- Manufacturer and retailer disclaim all product liability if the biscuit jointer is modified in any way from its original state or condition as delivered, or if the biscuit jointer is used in a manner inconsistent with operating and safety instructions.

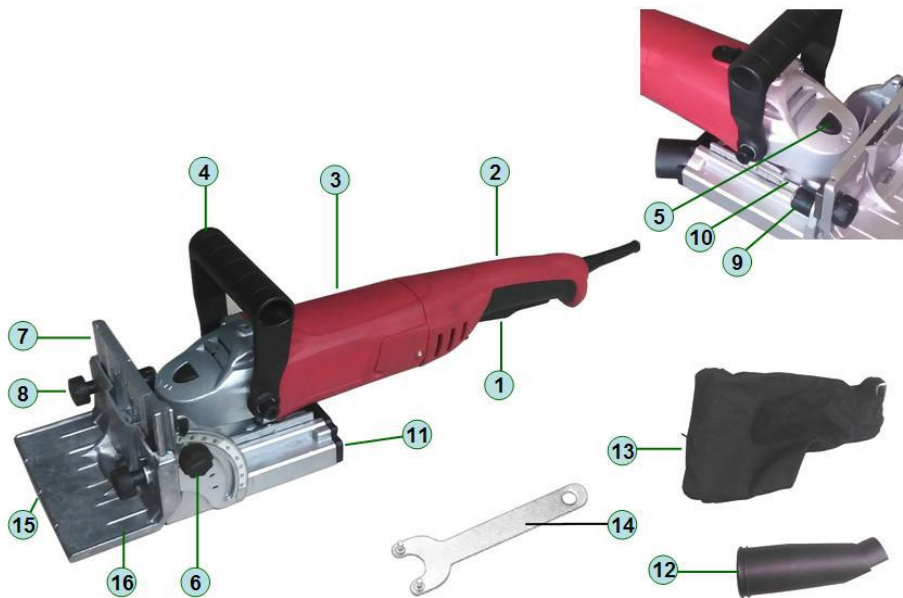
Symbols

	<p>WARNING! To reduce the risk of injury, the user must read the instruction manual before using this product.</p>
	<p>Wear eye protection.</p>
	<p>In accordance with essential applicable safety of European directives</p>

	Double insulation
	Denote risk of personal injury, loss of life or damage to the tool in case of nonobservance of the instruction in this manual.
	Faulty and /or discarded electrical or electronic apparatus have to be collected at the appropriate recycling location.

2. YOUR PRODUCT

Description



- | | |
|--|--|
| 1. ON/OFF trigger | 9. Setting wheel for cutting depth |
| 2. Handle | 10. Depth adjusting screw |
| 3. Drive motor | 11. Base plate |
| 4. Additional handle | 12. Adapter for dust extraction system |
| 5. Spindle lock button | 13. Dust bag |
| 6. Locking lever for angle adjustment | 14. Face spanner |
| 7. Angle fence | 15. Midline |
| 8. Locking lever for height adjustment | 16. Height fence |

Tool specifications

Model	FMLC1010
Voltage	230-240 V~
Frequency	50Hz
Input power	1010W
No load speed	12000/min
Cutter	100x4x22mm (4x5/32x7/8 in.)

Groove width	4 mm (5/32 in.)
Groove depth max.	18 mm (3/4 in.)
Weight of machine	3.1kg
Sound pressure values	Lpa: 89dB(A) K=3dB(A)
Sound power values	Lwa:100dB(A) K=3dB(A)
Protection class	II (Double insulation)
Handle vibration emission value	a _h : 2.83m/s ² K=1.5m/s ²

Information

- The declared vibration total value has been measured in accordance with a standard test method and may be used for comparing one tool with another.
- The declared vibration total value may also be used in a preliminary assessment of exposure.

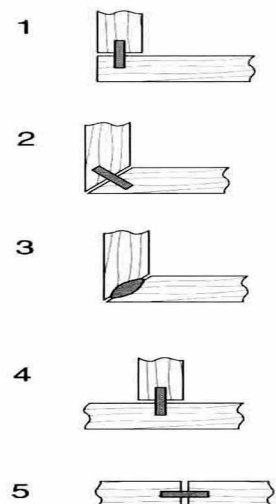
Warning

- The vibration emission during actual use of the power tool can differ from the declared total value depending on the ways in which the tool is used.
- Need to identify safety measures to protect the operator that are based on an estimation of exposure in the actual conditions of use (taking account of all parts of the operating cycle such as the times when the tool is switched off and when it is running idle in addition to the trigger time).

3. OPERATION

Types of joint

1. Corner joint
2. Miter joint
3. Frame joint
4. Centre wall joint
5. Butt joint



The biscuit jointer is suitable for joints in solid wood, plywood, chipboard, fiber board, Plexiglas, and artificial marble, etc. from 8 mm (5/16 in.) material thickness.

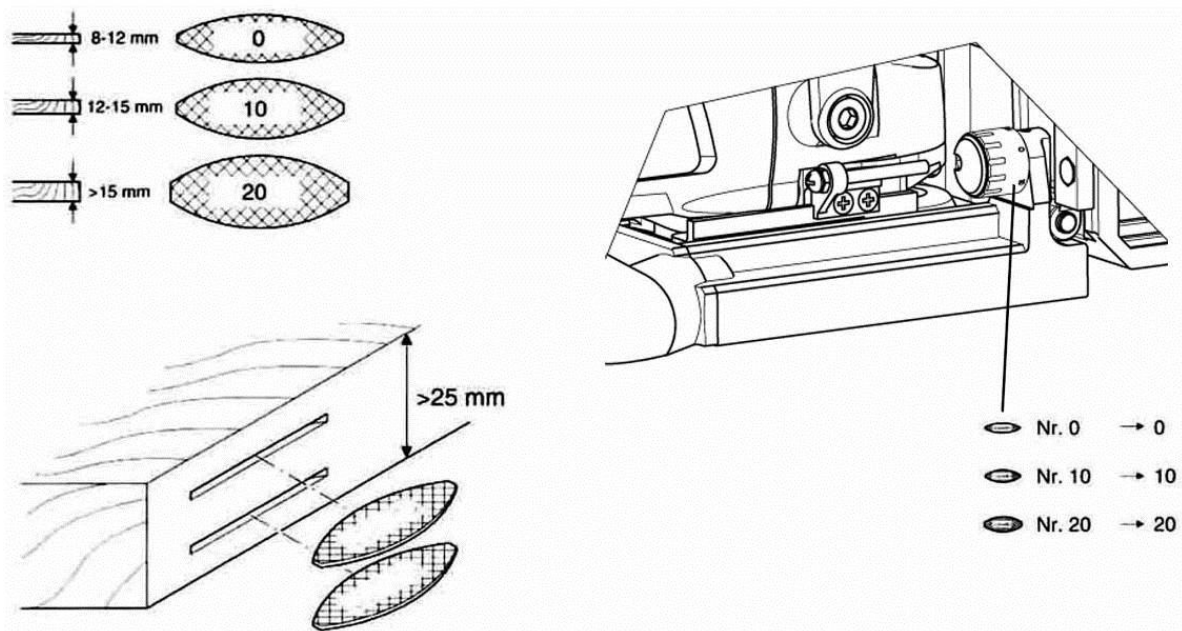
Selecting biscuit dowels

Always use the largest possible biscuit dowels for a strong joint. For materials over 25 mm (1 in.) thick, also 2 superimposed biscuit dowels.

The distance between the two lines should be at least 10 cm.

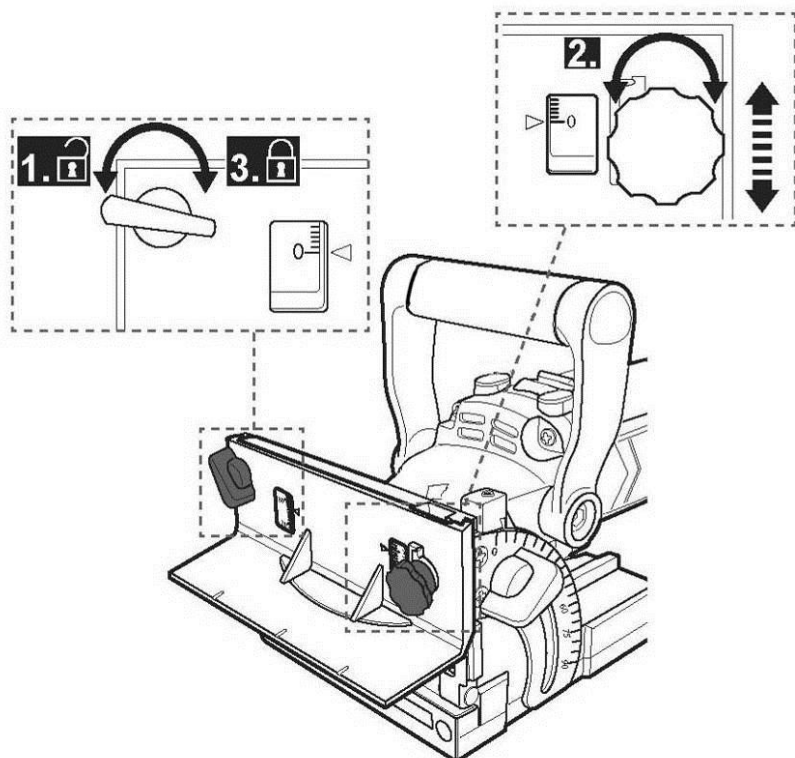
Biscuit dowel size	Dimensions
0	47×15×4mm
10	53×19×4mm
20	56×23×4mm

Setting the cutting depth



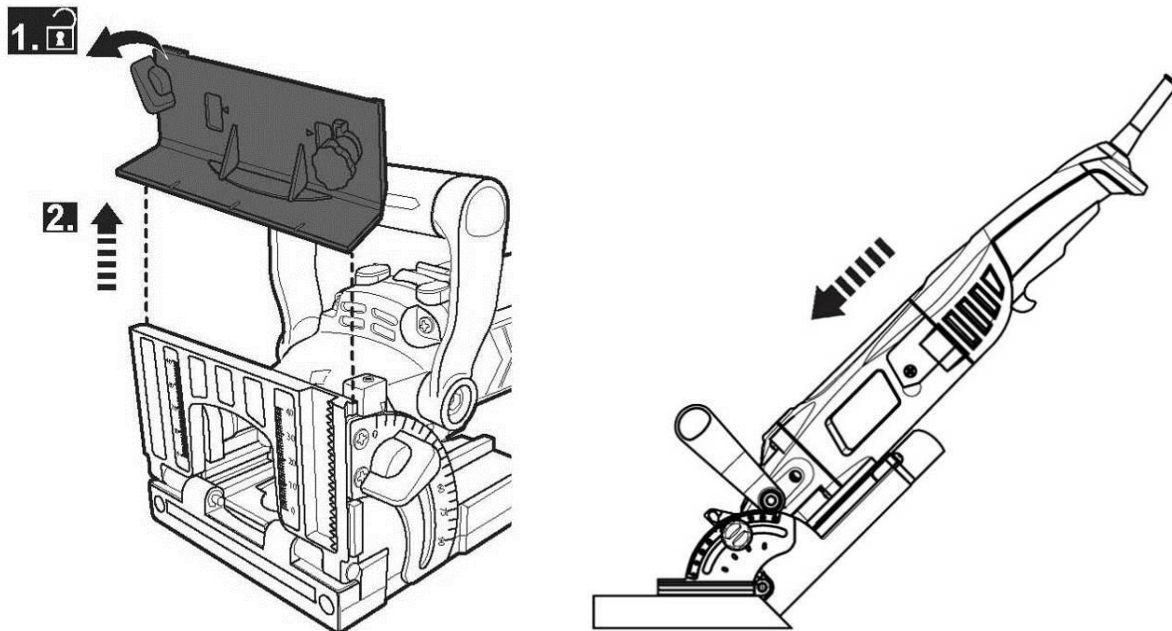
- Set the required cutting depth with the setting wheel (9).
- The designations on the setting wheel reflect the various sizes of biscuit dowels.
- You can adjust the cutting depth setting using the screw (10).
- Push the drive motor (3) forwards to check the cutting depth. The plug must be disconnected from the mains supply for this purpose.

Setting the cutting height

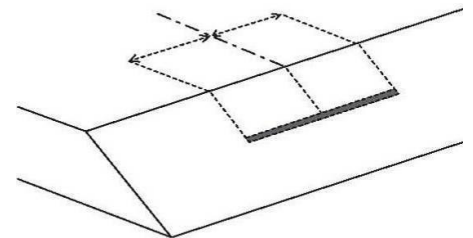


- Undo the locking lever for height adjustment (8).
- Set the required height on the scale with the height adjustment button.
- Retighten the locking lever for height adjustment (8).

Setting the cutting angle



- Loosen the locking height lever for height adjustment (8).
- Turn the adjustment knob clockwise to move the height fence (16) upward until it unfits the angle fence (7).
- Undo the locking lever for angle adjustment (6)
- The set angle is indicated by the arrow. Set the required angle on the scale.
- Re-tighten the Locking lever for angle adjustment (6).

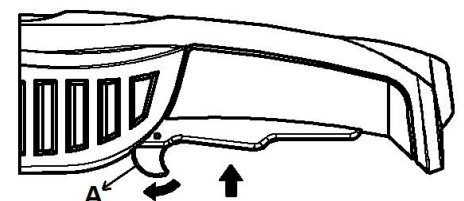


Possibilities:	Change:
1, Step Memory System	1 mm / grid
2, Stop square	1° / grid
3, Thickness biscuit dowels	4 mm
4, Combination	Optional

The setting of the vertical position of the jointer is important above all for mitre joining or combined with varying material thicknesses (work piece thickness).

ON/OFF switch


1. Plug the tool to electrical alimentation.
2. Pressing ON/OFF trigger (1) while moving the trigger lock (A) forward to turn "ON" the tool.
3. Loosing trigger lock (A) then press ON/OFF trigger (1) again to turn the tool "OFF".




Cutting operation

- Mark the cutting line and its centre on the workpiece.
- Clamp the workpiece on a flat surface to ensure it will not move during operation.
- Adjust the moving fence, cutting depth and cutting angle according to your needs.

- Place your product on the workpiece, the marking on the workpiece facing the marking on the moving fence (if applicable). Make sure that the disc cutter does not touch the surface yet.
- Switch the product on and wait until it runs at full speed before cutting into the workpiece.
- Push the product slowly forward at an even speed until the desired depth is reached.
- Pull the product backward from the workpiece before switching it off.

 Only apply as much pressure as necessary to keep the product flat on the workpiece. Higher pressure will not increase but lower the performance of the product and leads to uneven results.

Changing the cutter

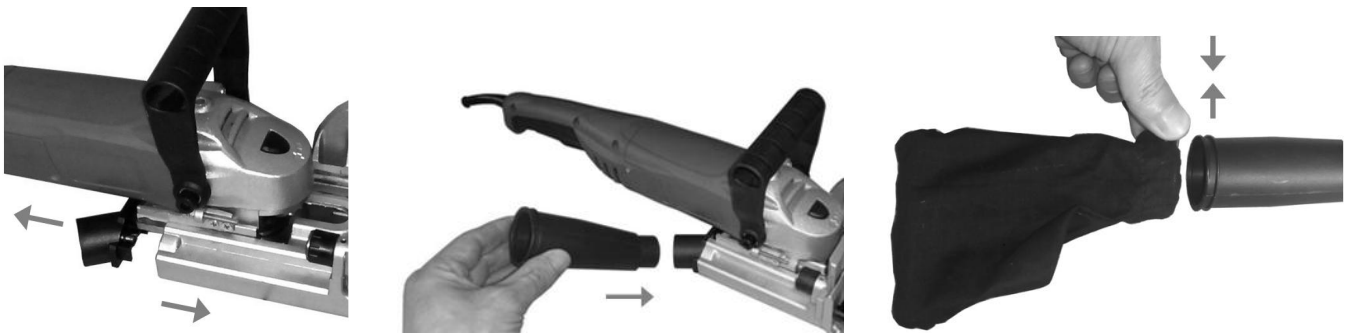
 **Danger of injury! Never adjust the appliance when the mains plug is in the socket. Wear protective gloves.**

- Unscrew the two screws of the base plate and slide it to remove it.
- Press and hold the spindle latch. At the same time, insert the two-prong wrench into the clamp and loosen the blade by turning the clamp counterclockwise.
- Remove the disc. Make sure the other flange is not moved.
- Insert the new disc and reassemble the tool by reversing the above steps. Tighten the clamp firmly.
- Replace the base plate and screw it with the two screws.


Dust extraction system

The adapter for the dust extraction system (12) and the dust bag (13) must be fitted.

- Attach the dust extraction system (12) onto the baseplate (11) all the way to the stop.
- Dust extraction system can join dust bag or dust collector.
- To join dust bag (13), clip dust bag spring and put it into the slot.



4. MAINTENANCE / CLEANING

 **WARNING:** Always ensure that the tool is switched off and the plug is removed from the power point before making any adjustments or maintenance procedures.

- Keep the tools air vents unclogged and clean at all times.
- Regularly check to see if any dust or foreign matter has entered the grills near the motor and around the trigger switch. Use a soft brush to remove any accumulated dust. Wear safety glasses to protect your eyes whilst cleaning.
- Lubricate all moving parts at regular intervals.

- If the body of the tool needs cleaning, wipe it with a soft damp cloth. A mild detergent can be used but nothing like alcohol, petrol or other cleaning agent. Never use caustic agents to clean plastic parts.

CAUTION! Water must never come into contact with the tool.

During use, the carbon brushes will wear down and will be indicated by a possible loss of power and excessive sparking seen through the ventilation slots. When the carbon brushes have worn down to approximately 4-5mm, they will require replacing.

CAUTION! Make sure that the tool is isolated from the mains power supply before fitting accessories, maintenance and adjustment if in doubt consult a qualified electrician.

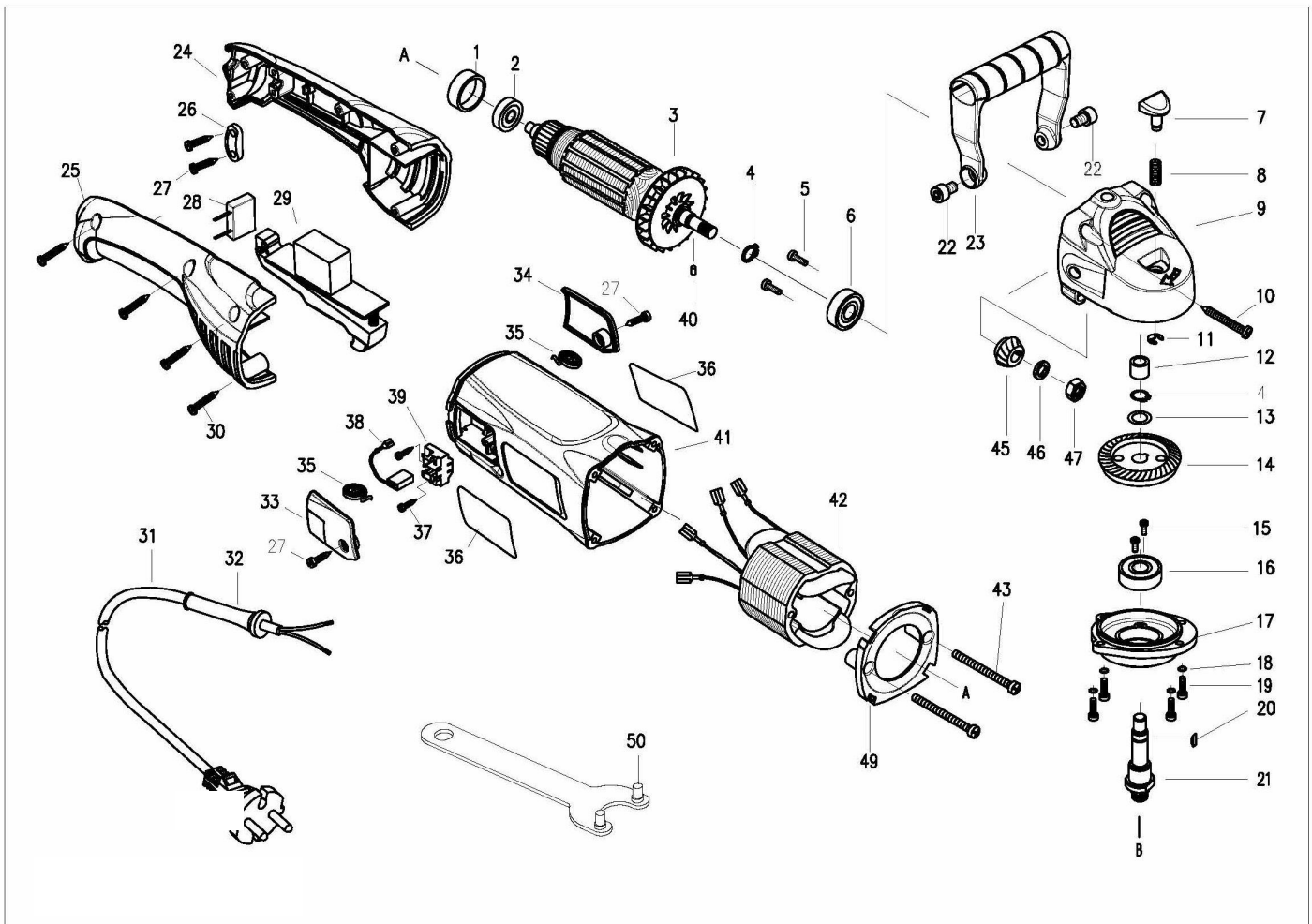
Place the tool on a workbench and use a screwdriver to remove the carbon brush cap.

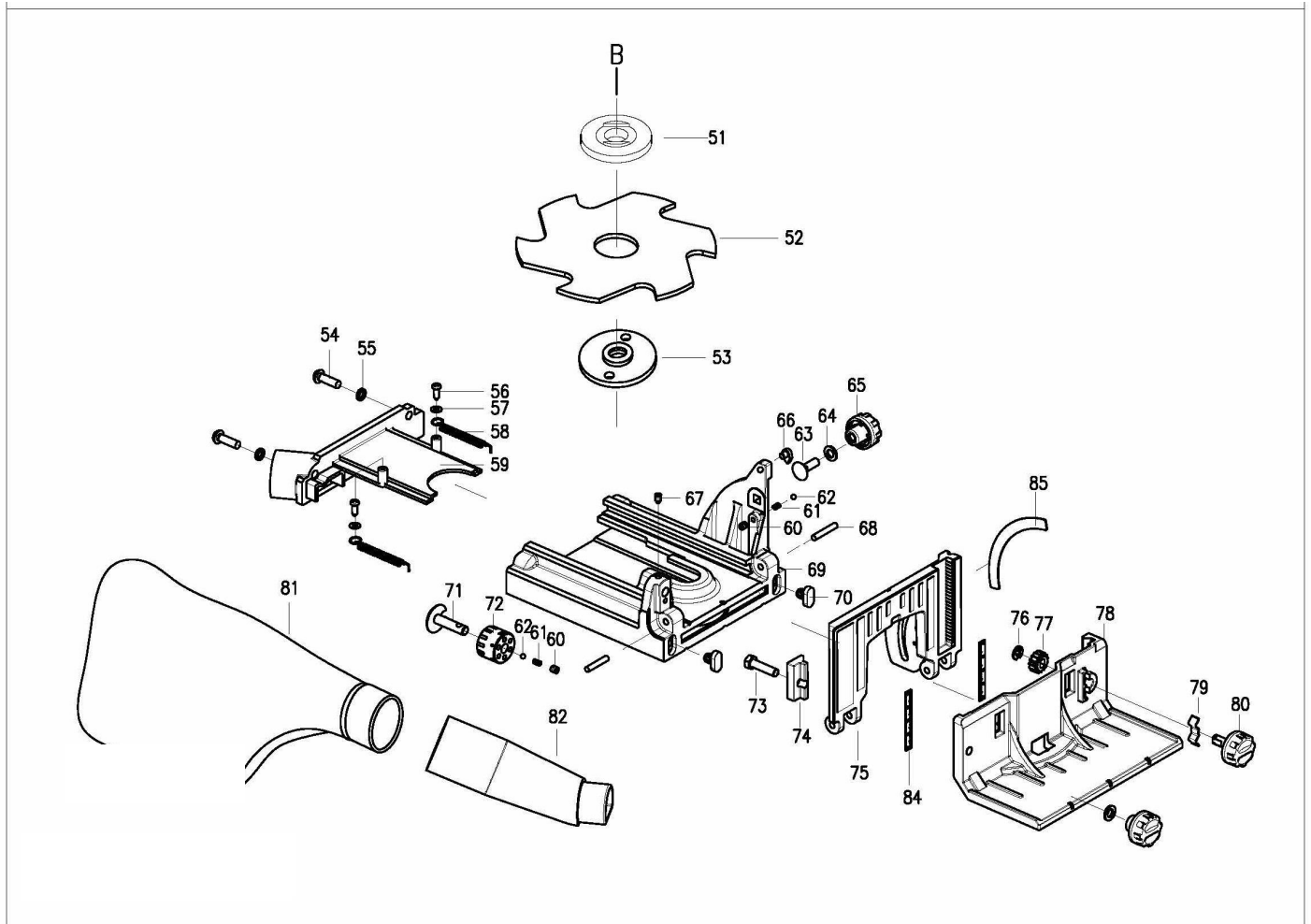
Remove the carbon brush from the brush housing and replace it with a new one. Slide the new carbon brush into the brush housing. Repeat this procedure for the other carbon brush. Then replace the carbon brush housing cover.

Note: carbon brushes must be replaced in pairs.

If the supply cord of this power tool is damaged, it must be replaced by a specially prepared supply cord available through the service organization.

5. EXPLOSION DIAGRAM





6. DISPOSAL



Les produits électriques ne doivent pas être mis au rebut avec les produits ménagers. Selon la Directive Européenne 2012/19/UE pour le rebut des matériels électriques et électroniques et de son exécution dans le droit national, les produits électriques usagés doivent être collectés séparément et disposés dans des points de collecte prévus à cet effet. Adressez-vous auprès des autorités locales ou de votre revendeur pour obtenir des conseils sur le recyclage.

7. DECLARATION OF CONFORMITY



BUILDER SAS

32 rue Aristide Bergès - Z.I. du Casque - 31270 Cugnaux - France,

declares that:

Product: BISCUIT JOINTER

Model: FMLC1010

Serial number: 20230507136-20230507635

Is in conformity with the essential requirements and other relevant provisions of the applicable European Directives, based on the application of European harmonized standards. Any unauthorized modification of the apparatus cancels this declaration.

European Directives (including, if applicable, their amendments up to the date of signature) ;

ROHS directive 2011/65/EU + (EU) 2015/863

Machine Directive 2006/42/EC

EMC Directive 2014/30/UE

European harmonized standards (including, if applicable, their amendments up to the date of signature);

EN 60745-1:2009+A11; EN 60745-2-19:2009+A1;

EN IEC55014-1: 2021

EN IEC55014-2: 2021

EN IEC61000-3-2:2019+A1; EN 61000-3-3:2013+A1+A2

Responsible of the technical file: Mr Olivier Patriarca

Cugnaux, 03/03/2023

Philippe MARIE / PDG

8. WARRANTY



WARRANTY

The manufacturer guarantees the product against defects in material and workmanship for a period of 2 years from the date of the original purchase. The warranty only applies if the product is for household use. The warranty does not cover breakdowns due to normal wear and tear.

The manufacturer agrees to replace parts identified as defective by the designated distributor. The manufacturer does not accept responsibility for the replacement of the machine, in whole or in part, and/or ensuing damage.

The warranty does not cover breakdowns due to:

- insufficient maintenance.
- abnormal assembly, adjustment or operations of the product.
- parts subject to normal wear and tear.

The warranty does not extend to:

- shipping and packaging costs.
- using the tool for a purpose other than that for which it was designed.
- the use and maintenance of the machine done in a manner not described in the user manual.

Due to our policy of continuous product improvement, we reserve the right to alter or change specifications without notice. Consequently, the product may be different from the information contained therein, but a modification will be undertaken without notice if it is recognized as an improvement of the preceding characteristic.

READ THE MANUAL CAREFULLY BEFORE USING THE MACHINE.

When ordering spare parts, please indicate the part number or code, you can find this in the spare parts list in this manual. Keep the purchase receipt; without it, the warranty is invalid. To help you with your product, we invite you to contact us by phone or via our website:

- **+33 (0)9.70.75.30.30**
- **<https://services.swap-europe.com/contact>**

You must create a "ticket" via the web platform.

- Register or create your account.
- Indicate the reference of the tool.
- Choose the subject of your request.
- Describe your problem.
- Attach these files: invoice or sales receipt, photo of the identification plate (serial number), photo of the part you need (for example: pins on the transformer plug which are broken).



9. PRODUCT FAILURE

WHAT TO DO IF MY MACHINE BREAKS DOWN?

If you bought your product in a store:

- a) Empty the fuel tank if your product has one.
- b) Make sure that your machine is complete with all accessories supplied, and clean! If this is not the case, the repairer will refuse the machine.

Go to the store with the complete machine and with the receipt or invoice.

If you bought your product on a website:

- a) Empty the fuel tank if your product has one.
- b) Make sure that your machine is complete with all accessories supplied, and clean! If this is not the case, the repairer will refuse the machine.
- c) Create a SWAP-Europe service ticket on the site: <https://services.swap-europe.com> When making the request on SWAP-Europe, you must attach the invoice and the photo of the nameplate (serial number).
- d) Contact the repair station to make sure it is available before dropping of the machine.

Go to the repair station with the complete machine packed, accompanied by the purchase invoice and the station support sheet downloadable after the service request is completed on the SWAP-Europe site

For machines with engine failure from manufacturers BRIGGS & STRATTON, HONDA and RATO, please refer to the following instructions.

Repairs will be done by approved engine manufacturers of these manufacturers, see their site:

- <http://www.briggsandstratton.com/eu/fr>
- <http://www.honda-engines-eu.com/fr/service-network-page;jsessionid=5EE8456CF39CD572AA2AEEDFD290CDAE>
- <https://www.rato-europe.com/it/service-network>

Please keep your original packaging to allow for after-sales service returns or pack your machine with a similar cardboard box of the same dimensions.

For any question concerning our after-sales service you can make a request on our website <https://services.swap-europe.com>

Our hotline remains available at +33 (9) 70 75 30 30.



10. WARRANTY EXCLUSIONS

THE WARRANTY DOES NOT COVER:

- Start-up and setting up of the product.
- Damage resulting from normal wear and tear of the product.
- Damage resulting from improper use of the product.
- Damage resulting from assembly or start-up not in accordance with the user manual.
- Breakdowns related to carburetion beyond 90 days and fouling of carburetors.
- Periodic and standard maintenance events.
- Actions of modification and dismantling that directly void the warranty.
- Products whose original authentication marking (brand, serial number) has been degraded, altered or withdrawn.
- Replacement of consumables.
- The use of non-original parts.
- Breakage of parts following impacts or projections.
- Accessories breakdowns.
- Defects and their consequences linked to any external cause.
- Loss of components and loss due to insufficient screwing.
- Cutting components and any damage related to the loosening of parts.
- Overload or overheating.
- Poor power supply quality: faulty voltage, voltage error, etc.
- Damages resulting from the deprivation of enjoyment of the product during the time necessary for repairs and more generally the costs related to the immobilization of the product.
- The costs of a second opinion established by a third party following an estimate by a SWAP-Europe repair station
- The use of a product which would show a defect or a breakage which was not the subject of an immediate report and/or repair with the services of SWAP-Europe.
- Deterioration linked to transport and storage*.
- Launchers beyond 90 days.
- Oil, petrol, grease.
- Damages related to the use of non-compliant fuels or lubricants.

* In accordance with transport legislation, damage related to transport must be declared to carriers within 48 hours maximum after observation by registered letter with acknowledgement of receipt.

This document is a supplement to your notice, a non-exhaustive list.

Attention: all orders must be checked in the presence of the delivery person. In case of refusal by the delivery person, it you must simply refuse the delivery and notify your refusal.

Reminder: the reserves do not exclude the notification by registered letter with acknowledgement within 72 hours.

Information:

Thermal devices must be wintered each season (service available on the SWAP-Europe site). Batteries must be charged before being stored.



BUILDER SAS

32 rue Aristide Bergès - Z.I. du Casque - 31270 Cugnaux - France

Made in PRC